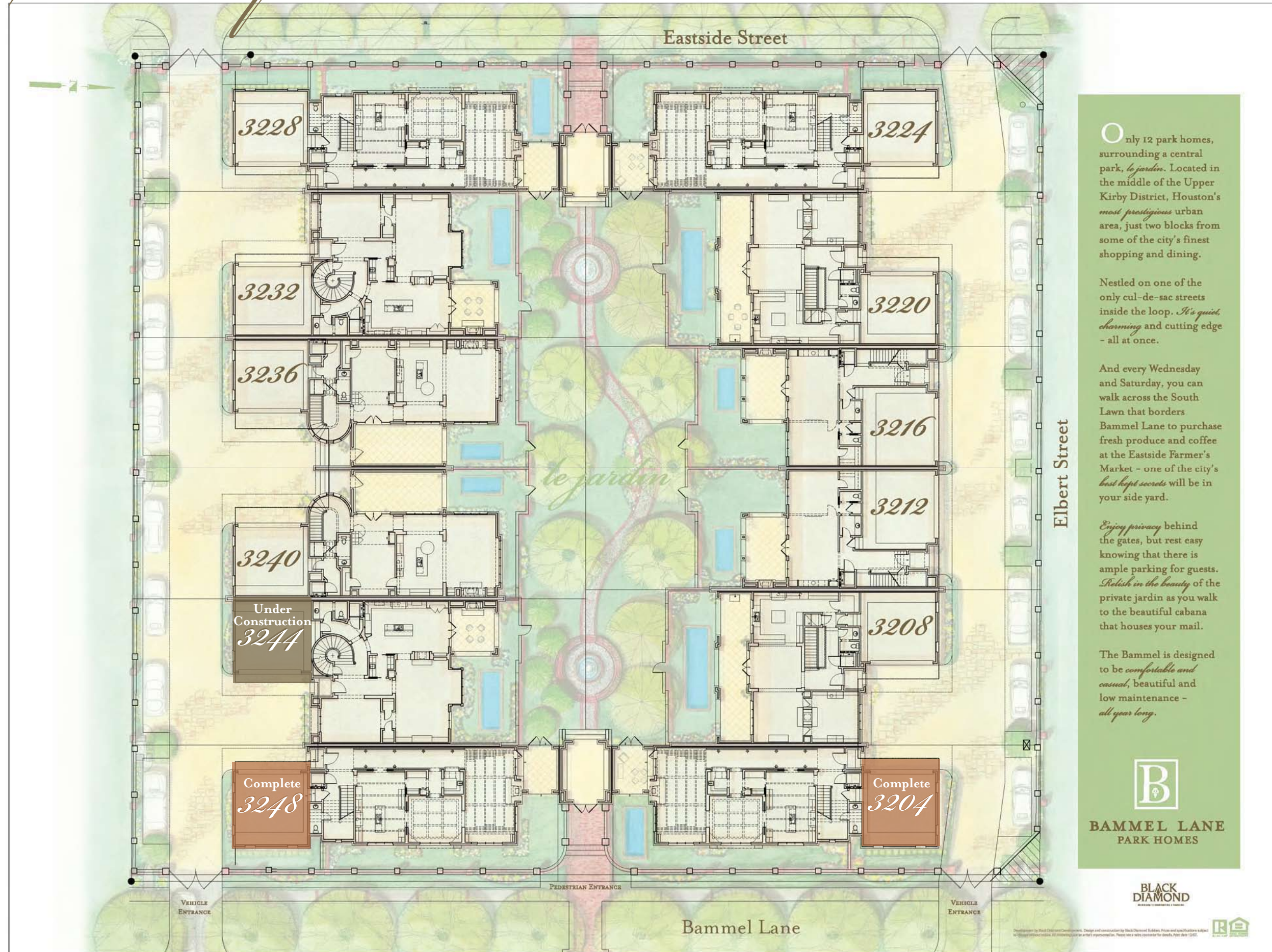


Site Map



Only 12 park homes, surrounding a central park, *le jardin*. Located in the middle of the Upper Kirby District, Houston's most prestigious urban area, just two blocks from some of the city's finest shopping and dining.

Nestled on one of the only cul-de-sac streets inside the loop. It's quiet, charming and cutting edge - all at once.

And every Wednesday and Saturday, you can walk across the South Lawn that borders Bammel Lane to purchase fresh produce and coffee at the Eastside Farmer's Market - one of the city's best kept secrets will be in your side yard.

Enjoy privacy behind the gates, but rest easy knowing that there is ample parking for guests. Relish in the beauty of the private jardin as you walk to the beautiful cabana that houses your mail.

The Bammel is designed to be comfortable and casual, beautiful and low maintenance - all year long.



BAMMEL LANE
PARK HOMES

BLACK
DIAMOND



Developed by Black Diamond Development. Design and construction by Black Diamond Builders. Price and availability subject to change without notice. All contents are subject to change. Please see a sales consultant for details. Site date 12/12.